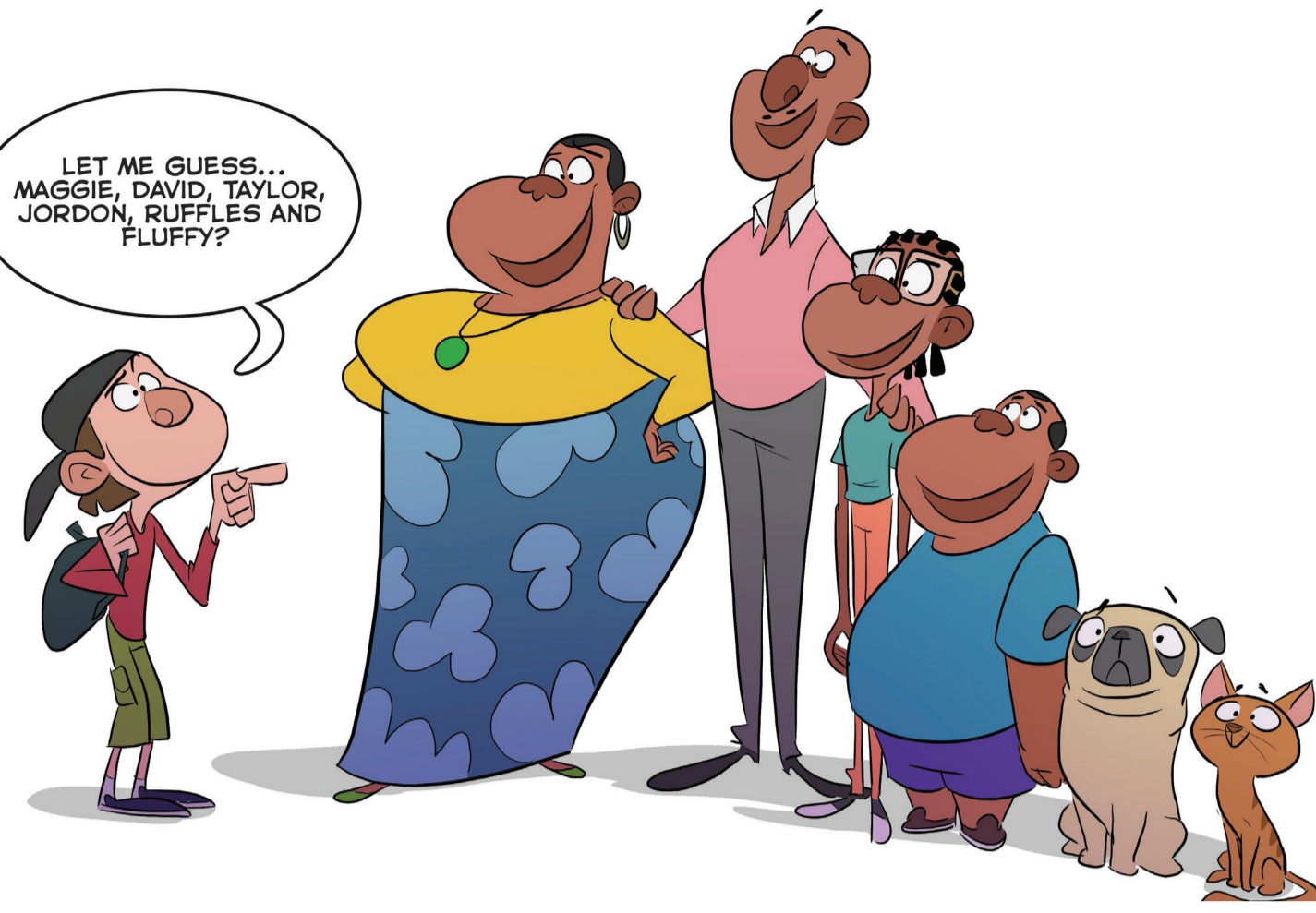
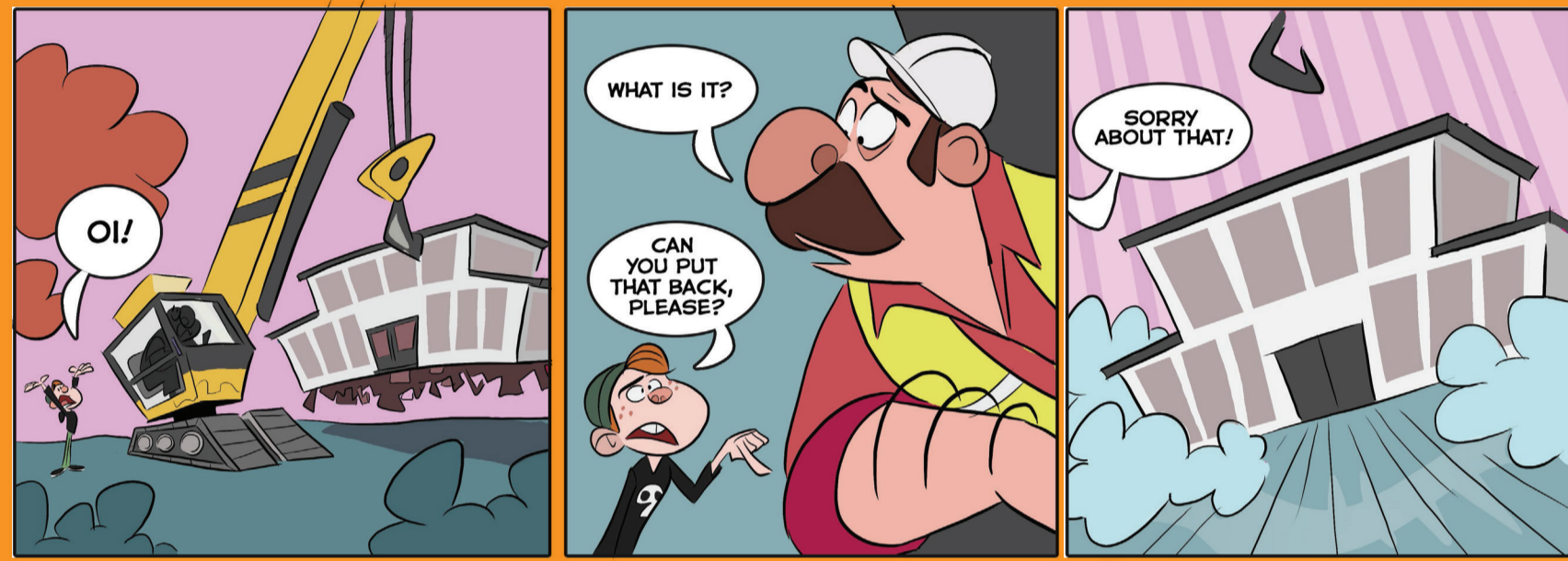


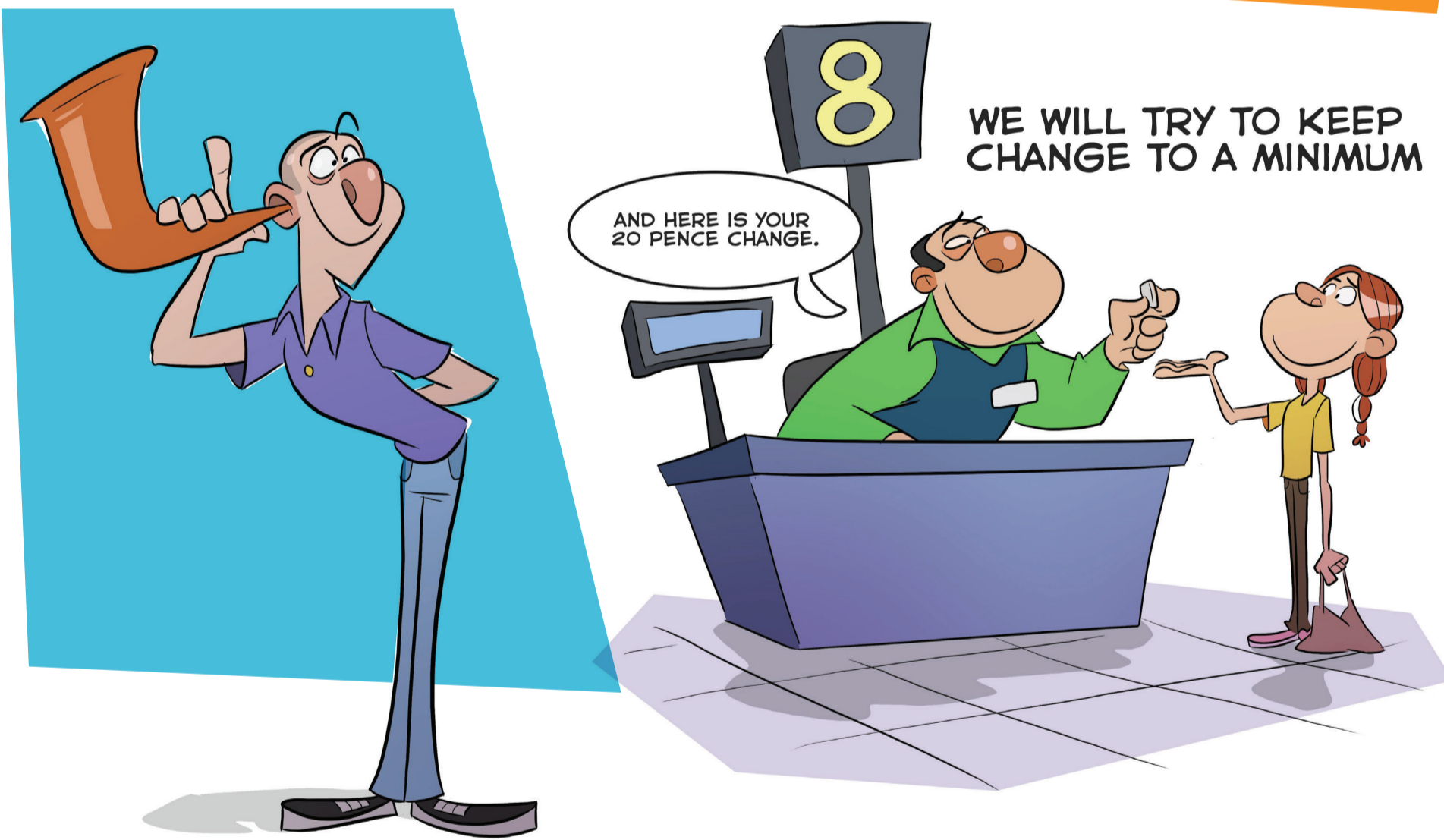
LET ME GUESS...
MAGGIE, DAVID, TAYLOR,
JORDON, RUFFLES AND
FLUFFY?



WE WILL GIVE YOU INFORMATION ABOUT ALL YOUR PLACEMENTS IN ADVANCE
(THIS WILL INCLUDE: NAME OF CARERS, DETAILS AND AGES OF OTHER
YOUNG PEOPLE, THE PLACE, PETS, ETC.)



WE WILL NOT MOVE YOUR SCHOOL
EXCEPT IN EXCEPTIONAL CIRCUMSTANCES.



WE WILL LISTEN TO YOUR VIEWS ABOUT
PLACEMENTS.

WE WILL TRY TO KEEP
CHANGE TO A MINIMUM

AND HERE IS YOUR
20 PENCE CHANGE.



WE WILL TELL YOU WHY YOU ARE MOVING/ WE WILL
INVOLVE YOU IN THE MOVE.

THIS IS THE MAGNA CHARTER!

The Magna Charter is our commitment to
avoid unhelpful changes in your life.

If changes do happen, we promise we'll help you
understand what's going on and make sure your
views are listened to. Just like these cartoons, this
can include changes to your social worker, your
school, or your placement.

If you think you are not being listened to and
involved, and that the Magna Charter isn't
working for you, here's what you can do:

- Speak to someone you trust and tell them what's not right. This could be your foster carer or social worker, or someone else who can help you to be heard
- Make a complaint by emailing complaints@southtyneside.gov.uk

To find out more about the Magna Charter
and what you can do if you think something is
changing for you, see:
www.southtyneside.gov.uk/magnacharter



WE WILL VALUE YOUR FAMILY RELATIONSHIPS.

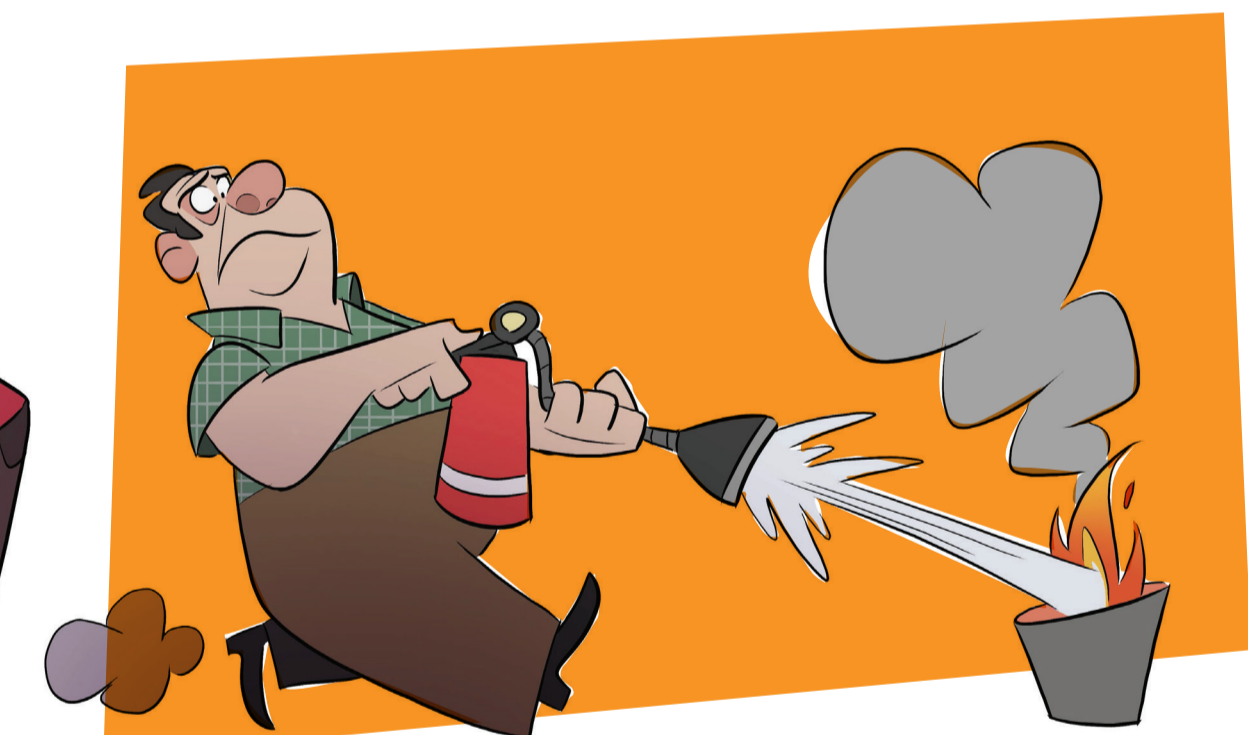


WE WILL ALWAYS TELL YOU WHEN YOUR
SOCIAL WORKER IS CHANGING.

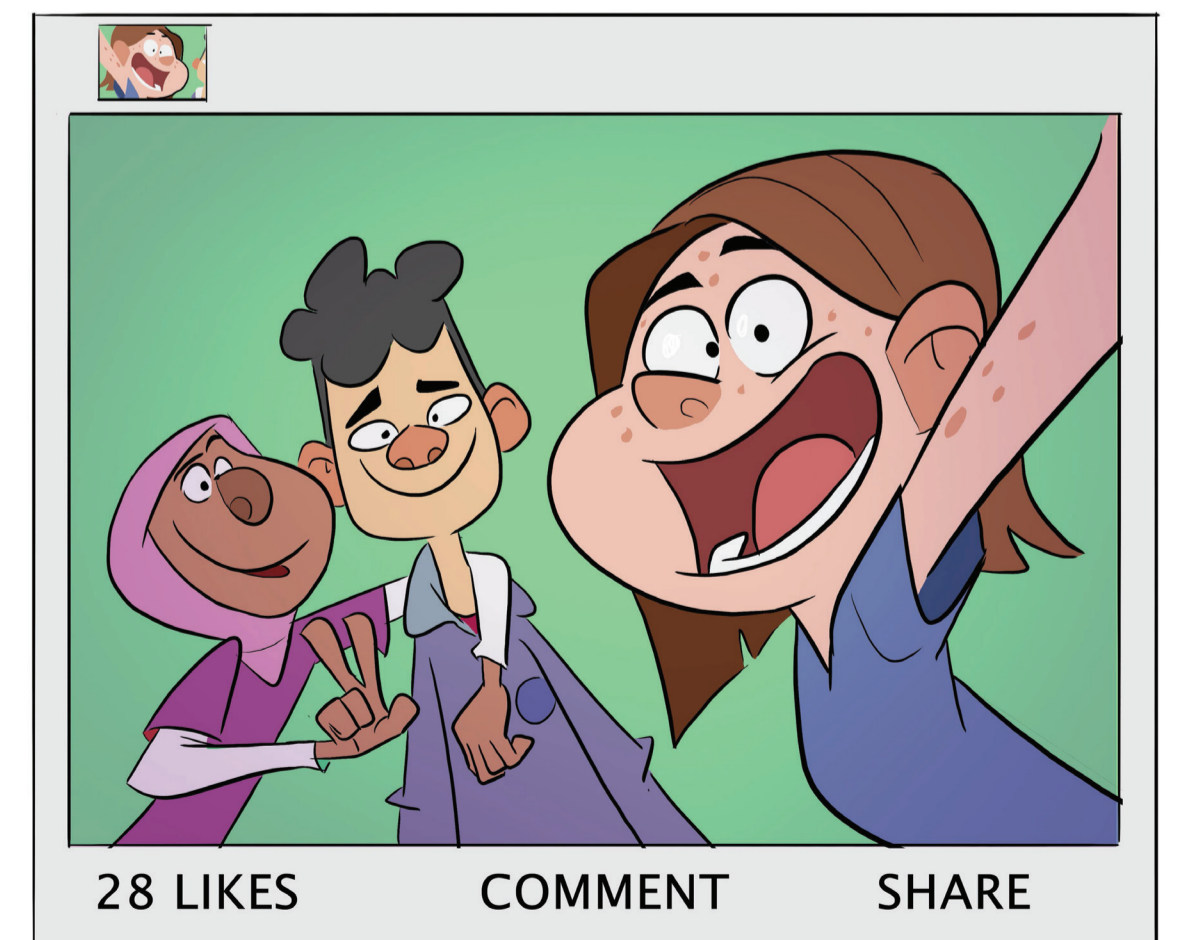


STAY,
PUT!

WE WILL
PROACTIVELY SUPPORT
AND PROMOTE
'STAYING PUT'.



WE WILL TRY TO STOP
ISSUES ESCALATING.



28 LIKES COMMENT SHARE

WE WILL SUPPORT YOUR RELATIONSHIP
WITH YOUR FRIENDS.